

RBR Builds

DBA Management of RBR LLC

CNC MACHINING

CAPABILITIES



3-Axis Milling

Maximum Dimensions:
60 x 23 x 19in



5-Axis Milling

Maximum Dimensions:
27 x 15 x 15in

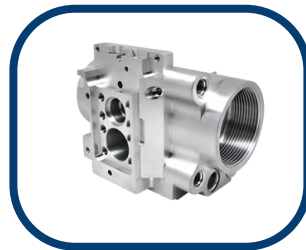


Turning

Maximum Dimensions:
39L x 11D



**Delrin
3 Axis Machined**



**301 Stainless Steel
5 Axis Machined**



**316 Stainless Steel
Turning/Lathe**

| METALS & COMPOSITES | | | | |
|---------------------|------------------------|-----------------|-------------|------|
| ALUMINUM | 2024-T351 | STAINLESS STEEL | 12L14 | |
| | 5052-H32 | | 1018 | |
| | 6061-T651 | | 17-4 PH | |
| | 7075-T651 | | 303 | |
| | MIC-6 | | 304 | |
| BRASS | C260 | TOOL STEEL | 316 | |
| | C360 | | 416 | |
| TITANIUM | GRADE 2 | | STEEL ALLOY | 4140 |
| | GRADE 5 6Al-4V | | TOOL STEEL | A2 |
| | GRADE 23 Ti 6Al-4V ELI | | | S7 |
| COMPOSITES | Carbon Fiber | S503 | | |
| | Garlolite G-10 | P20 | | |
| | Garlotiue FR-4 | S136H | | |

| PLASTIC | | | | |
|-------------|-----------------|-------------------------|---------------|--------------------|
| ABS | ABS | POM (ACETAL/DELIRIN) | Homopolymer | |
| | Flame Retardant | | 20% GF | |
| ACRYLIC | Acrylic | | copolymer | |
| NYLON | Nylon 6 | | PP | Static Dissapative |
| | Nylon 6/6 | | | Homopolymer |
| PC | Polycarbonate | PPE/PS | copolymer | |
| | 20% GF | | Noryl 265 | |
| PEI (ULTEM) | PEI (Ultem) | PTFE | PTFE (Teflon) | |
| | PEI 30% GF | PVC | PVC | |
| PET | PET | UHMW | UHMW-PE | |

POST PROCESS UPON DISCUSSION



ON TIME AND IN SPEC DELIVERY



MACHINED PROJECTS FROM \$50



+/- .001" TIGHTES TOLERANCE

CONTACT US FOR A QUOTE!

CONTACT@RBRBUILDS.COM

Contact by phone or Email!

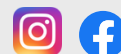
978 -382 - 0670
contact@rbrbuilds.com

RBR Builds

DBA Management of RBR LLC



Follow us on:



@RBR_builds