

RBR Builds

DBA Management of RBR LLC

3D PRINTING CAPABILITIES



Fused Deposition Modeling

Maximum Dimensions:
36 x 24 x 36in



Selective Laser Sintering

Maximum Dimensions:
14 x 14 x 17in

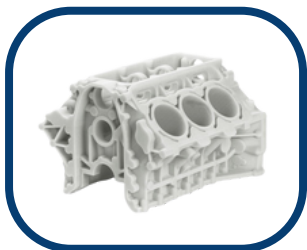


Stereolithography

Maximum Dimensions:
59 x 30 x 22in



ABS
FDM Printed



Nylon PA12
SLS Printed



PP Resin
SLA Printed

FDM	ABS-M30: White, Black, Blue, Red, Gray, or Ivory
	ABS-ESD7 (Electro Static Dissapative)
	ASA: White, Black, Dark Gray, Light Gray, Dark Blue, Green, Yellow, Orange, Ivory
	Polycarbonate
	PLA: White, Black, Blue, Red, Gray, Purple, Yellow
	Nylon 12
	Nylon 6
	Nylon CF Filled
	Ultem 9085
	Ultem 1010
	PPSF
	PEKK

SLA	White ABS-Like - Accura 25
	Clear Polycarbonate-Like - Accura 60
	Black ABS - Like - Renshape 7820
	Gray ABS - Like - Accura Xtreme Gray
	White tough and Durable - Accura Xtreme White
	Clear ABS-Like - Accura ClearVue
	High Temp Polycarbonate - Accura 48
	Flexible Resin

SLS	wHITE Nylon 12
	Black Dyed Nylon 12
	Nickel Plated Nylon Composite
	Glass Filled Nylon
	High Temperature Composite
	70A TPU: Rubber Like
	94A TPU: Rubber Like
	Black Nylon 11
	White Nylon 11

POST PROCESS UPON DISCUSSION



ON TIME AND IN SPEC DELIVERY



**INDUSTRIAL 3D PRINTING
PROJECTS FROM \$5**



CONTACT US FOR A QUOTE!

CONTACT@RBRBUILDS.COM

Contact by phone or
Email!
978 -382 - 0670
contact@rbrbuilds.com

RBR Builds
DBA Management of RBR LLC

Follow us on:
 
@RBR_builds